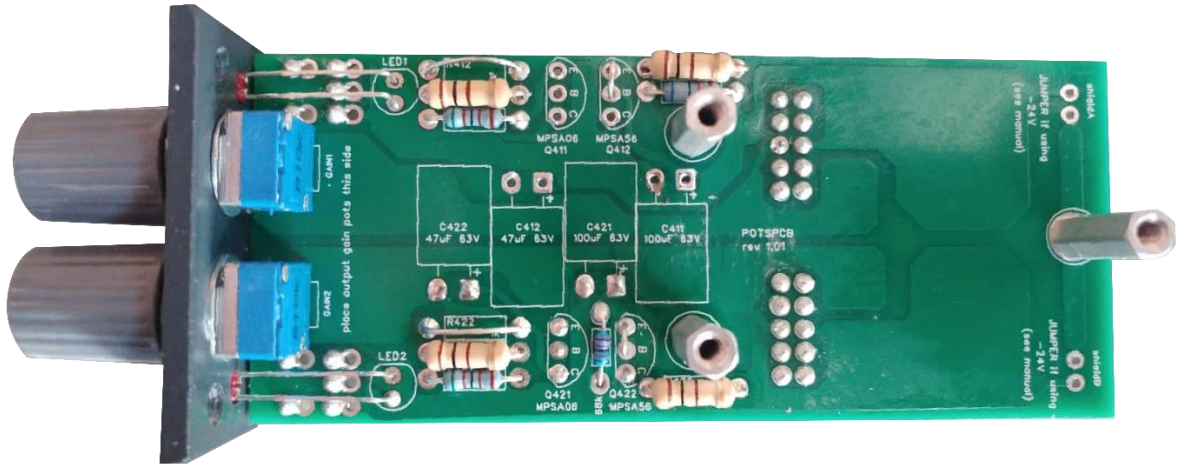


48V PCB Mod



Description:

This mod removes the ramp up feature of the 48V PCB.

Why:

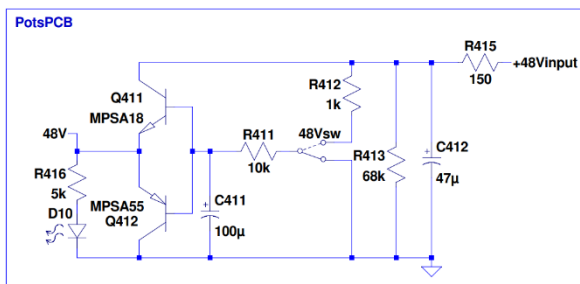
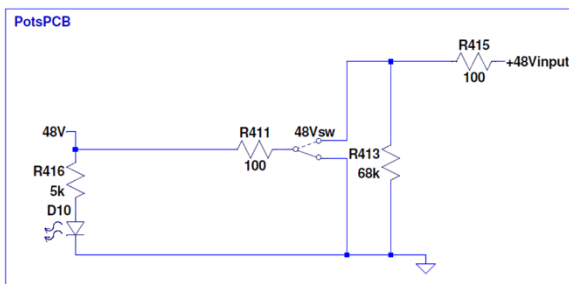
Although the ramp up stops the sudden pop you get when switching on phantom power, some microphones may misbehave with a ramp-up turn-on behaviour, defeating the purpose.

Recommendation:

If you have already built the unit and are not having any issues, then I recommend keeping it as is. If you have not yet built it, I would build it as the mod states as it's a simpler circuit with less parts, and all microphones will work the same.

Schematics:

Modded circuit on the left, original on the right



Instructions:

Solder as normal:

- R416/R426
- LEDs
- Switches
- R413/R423

Solder different value:

- R415/R425 = 100 (If 150 already fitted, you can leave it as is)
- R411/R211 = 100 (If 10k already fitted, you can solder in parallel to save desoldering)

Leave out (If already fitted, can be cut out to save desoldering):

- Q411/Q421
- Q412/Q422
- C411/C421
- C412/C422

Jumper:

- E & B of Q411/Q421
- R412/R422